



ECHOGRAPHE DIGITAL DOPPLER

BELSON5000L

Portable Color Doppler System



Making Our Life Healthier





ECHOGRAPHE DIGITAL DOPPLER

Technical Specification

Display mode

B&W mode:	B,2B,B/M,4B,B/C
Color Doppler mode:	CFM,PDI,PW
Triplex:	Real-time simultaneous 2D,Doppler & CFM
Duplex:	Real-time simultaneous 2D & Doppler
Gray scale:	256
Display:	15"LCD monitor
Transducer frequency:	2.5-10Mhz
Digital technology:	Dynamic Receiving Focusing (DRF) Dynamic Frequency Scanning (DFS)
Scanning depth:	240mm

Imaging Processing

Pre-processing:	8-segment TGC Preset Gain (B&W, Color,Doppler) PRF Dynamic range Image enhancement Audio
Post-processing:	Acoustic power gray map Black/white reverse Left/right reverse Up/down reverse

Functions

B/C:	CFM & B images displayed on the same interface for contrast
Cine-loop:	100 frame cine loop memory (enhanced to be 256 frame in the future)
Storage media:	64GB massive image-storage capacity, USB
Zoom:	Pan Zoom
THI:	One key for optimization
iTouch:	In updating
Panoramic Imaging:	In updating
Trapezoid Imaging:	In updating
iClear Imaging:	Optional

Measurement & Calculations

B mode:	distance, circumference, area, volume, angle, fetal growth curve
M mode:	distance, time, velocity, heart rate
Doppler Mode:	In updating
Software packages:	abdomen, gynecology, obstetrics, cardiology, small parts, urology

Others

Transducer connector:	2 active transducer connector ports
Peripheral ports:	video, S-video, VGA, 4 USB ports
Power supply:	100-240VAC±10%, 50Hz/60Hz
Dimensions(main unit):	190mm (W) X365mm (L) X 430mm (H)
Net weight:	7.5Kg

Probe types

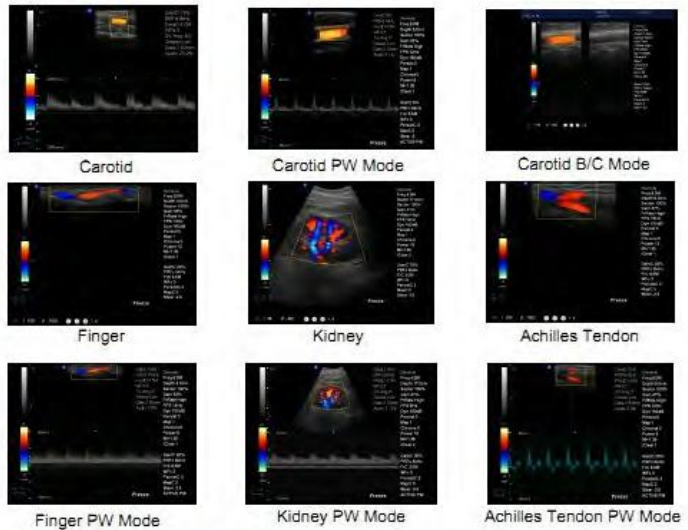
- 3.5 MHz convex probe
- 7.5 MHz linear probe
- 6.0 MHz trans-vaginal probe
- 5.0 MHz micro-convex probe

Multi-frequency probes



60R/3.5MHz convex probe Application:Abdomen. GYN.OB	7.5MHz linear probe Application: Vascular, Small Parts	20R/5.0MHz micro-Convex probe Application: Pediatric, Cardiac	6.0MHz trans-vaginal probe Application: Vaginal
---	---	---	---

Our images



Standard Configurations

- BELSON5000M main unit
- 15" LCD with high resolution and contrast
- INTEL Core 2 Duo L9400 CPU
- 2GB DDR Ram
- 64GB high speed SSD hard disc
- Four USB ports
- One S-video output port
- Two transducer connectors
- Measurement & calculation software packages (General, Small parts, OB&GYN, Urology)

Optional

- 3.5MHz multi-frequency convex probe
- 7.5MHz Linear probe
- 6.0MHz Transvaginal probe
- 5.0MHz Micro-convex probe
- MITSUBISHI thermal video printer
- iClear function