



# ECHOGRAPHE DIGITAL NOTEBOOK

## BELSON3000M

### Digital Mobile Ultrasonic Diagnostic System

#### Technical Specification

##### Performance

Image mode: B, B+B, 4B, B+M, M  
 Grey: 256  
 Display: 10.1" high-resolution TFT LCD  
 Probe frequency: 2.5~10.0 MHz  
 Probe connector: 1  
 Lateral resolution: ≤3 mm (depth ≤80mm)  
 ≤4 mm (80mm≤depth ≤130mm)  
 longitudinal resolution: ≤2 mm (depth ≤80mm)  
 ≤3 mm (80mm≤depth ≤130mm)  
 Detectable depth: ≥160mm  
 Blind area: ≤5mm  
 Geometrical position distortion: Lateral ≤15  
 Longitudinal≤10

##### Imaging Processing

Pre-processing: Continuously variable aperture  
 TGC (Near Middle Far)  
 Dynamic filtering  
 Dynamic Range  
 Edge enhancement  
 Frame correlation  
 Smooth  
 Gray map  
 Post- processing: Black/white reverse  
 Left/right reverse  
 Up/down reverse

##### Functions

Cine loop: 192-frame cine loop memory  
 Zoom: ×0.8×0.9×1.0×1.1×1.2×1.3×1.4×1.5  
 magnifications in real time  
 Permanent Storage: 1024  
 Storage media: Massive image-storage capacity  
 USB disk  
 SD card  
 Front panel control: Brightness, overall gain of the image  
 Focusing method: Automatic multi-stage focusing  
 OSD (On Screen Display): Date, Time, age, sex ,Patient ID and  
 hospital information, Gain, Focusing,  
 Comments, Scroll, Zoom setting  
 Measurements: Distance, circumference, area/perimeter,  
 volume, heart rate, pregnant week, fetal  
 weight, etc.  
 Body-marks: More than forty different body-markers  
 Adjustable biopsy guideline: Guidance for puncture  
 Sleep mode: Save energy and protect screen and probe  
 Parameter Preset: Suitable present for different application  
 (Gynecology, Heart, Abdomen)

##### Measurement & Calculations

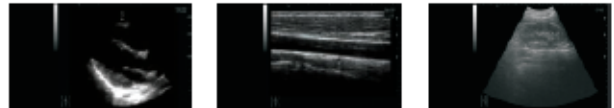
B-mode : Distance, circumference, area, volume  
 M-mode: Distance, velocity, heart rate  
 Software packages: Abdomen  
 (Distance, circumference, area, volume)  
 GYN/OB  
 (EDD,GA,BPD,GS,CRL,AD,AC,FL,HC,  
 FTA,APTD,TTD,FW)  
 Cardiology  
 (SAm, SL, SAI, SD, DAm, DL, DAI, DD,  
 ESV, EDV, SV, EF)

##### Multi-frequency transducers

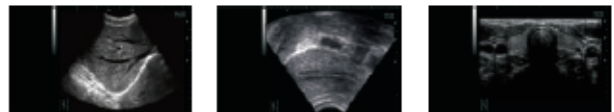


Convex probe      Linear probe      Micro-convex probe      Transvaginal probe

##### Our images



Heart      Vascular      Kidney



Liver      Endometrial      Thyroid

##### Others

Peripheral port: Video output 1  
 USB port 2  
 MiniUSB2.0 port  
 Power supply: AC 100V-240V  
 50Hz/60Hz  
 Dimension (cm): 37(L)X27(W)X6(H)  
 Net weight: 1.5 KG

##### Standard Configurations

3000M Main unit  
 10.1" high-resolution TFT LCD  
 1pc 3.5MHz R60 convex probe  
 One connector  
 192 frames cine-loop  
 1024 permanent storage  
 OB report  
 OB & GYN & Cardiac software  
 2 USB port & 1 mini2.0USB port  
 VALENX Li-Ion battery  
 One bottle of gel

##### Optional

6.5MHz Trans-vaginal probe  
 7.5MHz linear probe  
 5.0MHz Micro-convex probe

