



# Mindray Ultrasound Products



## EXCOTRAMED SPRL

37 Try des rudes  
B 1450 Chastre BELGIUM

Tel: ☎ + 32 81 610 619

Fax: 📠 + 32 81 600 292

e-mail: [info@excotrained.be](mailto:info@excotrained.be)

Web : <http://www.excotrained.be>



# Mindray Ultrasound Product Line

Black & White  
Systems

Color Doppler  
Systems



## *Diagnostic confidence from premium image quality*



- ❖ State-of-the-art image quality and performance
- ❖ **Five frequency transducers with two harmonics**
- ❖ **THI (Tissue Harmonic Imaging)**
- ❖ Abundant exam modes and automatic measurement packages
- ❖ IP( Image processing)-one button image optimization
- ❖ 256-frame cine loop in B, dual B and B/M modes
- ❖ **80G Hard Disk, CD-R/W, USB, VGA, S-Video ports and optional DICOM3.0**



# Transducers for DP-9900Plus



**35C50HA**  
**(2.5/3.5/5.0/H4.6/H6.0MHz)**



**75L38HA/HB**  
**(6.0/7.5/8.5/10MHz)**



**75L60HB**  
**(6.0/7.5/8.5/10MHz)**



**35C20HA**  
**(2.0/2.5/3.5/5.0MHz)**



**65C15HA**  
**(5.0/6.5/7.5/8.5MHz)**



**65EC10HA**  
**(5.0/6.5/7.5/8.5MHz)**

Needle-guided Brackets





# DP-8800Plus

## *Competitive Price Performance in Ultrasound Market*



- ❖ **Wide clinical application: 6 transducers**
- ❖ **Built-in patient information management system and file management system**
- ❖ **TSI (Tissue Specific Imaging)**
- ❖ **IP(Image processing): one button image optimization**
- ❖ **Max Frame Rate: 250 frames/sec**
- ❖ **256-frame cine loop in B, dual B and B/M modes**
- ❖ **80G Hard Disk, CD-R/W, USB, VGA, S-Video ports and optional DICOM3.0**



# DP-7700

## *The Economic Choice for Mobile Ultrasound*



- ❖ All-digital imaging technology
- ❖ Multi-frequency transducers up to 10MHz
- ❖ Extensive clinical applications
- ❖ Multi-language function
- ❖ Two USB ports and built-in image archive
- ❖ 128-frame cine loop & 90 image storage
- ❖ IP (Image Process) – one button image optimization
- ❖ Optional 14" non-interlaced monitor



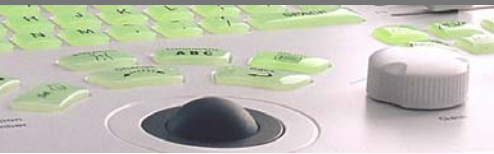
# DP-6600

## *Worldwide Best-Selling Portable Ultrasound*



- Excellent image quality with high mobility (12Kg)
- TSI (Tissue Specific Imaging)
- **256-frame cine loop**
- Multi-language function
- Powerful preset and measurement packages
- **Standard two transducer connectors**
- IP (Image Process) – one touch image optimization
- Two USB ports and optional DICOM3.0





# Transducers for DP-6600



**35C50EA**  
(2.0/3.5/6.0MHz)



**75L38EA**  
(5.0/7.5/10MHz)



**75L60HA**  
(5.0/7.5/10MHz)



**65EC10EA**  
(5.0/6.5/8.0MHz)



**35C20EA**  
(2.0/3.5/6.0MHz)

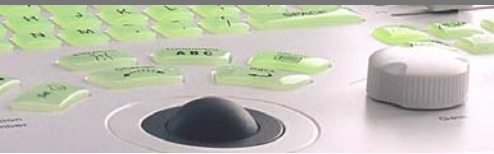


**65C15EA**  
(5.0/6.5/8.0MHz)

Needle-guided Brackets

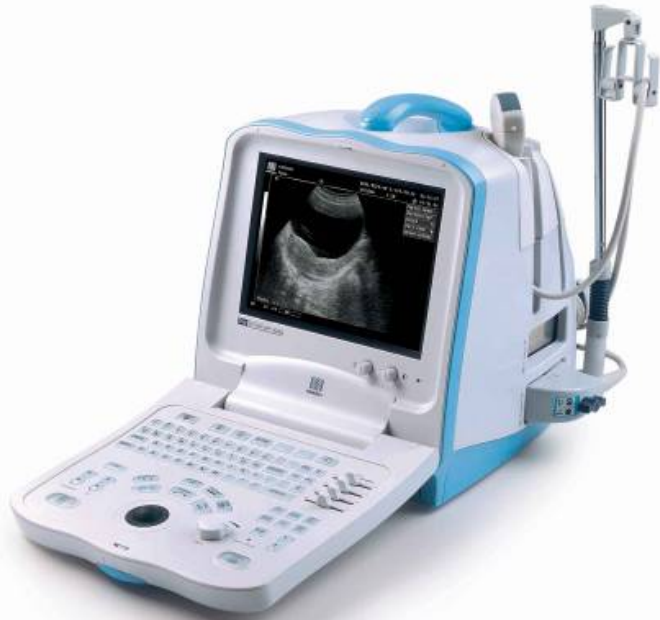






# DP-3300

## *Integration of Advanced Technologies and Competitive Price*



- **Impressive image quality**
  - **IP (image process) – one touch image optimization**
  - **128-frame cine loop & 90 image storage**
- **User-friendly**
  - **2 USB ports, hand carried bag**
  - **Support 8 languages**
- **Ergonomic Design**
  - **Backlit keyboard**

## *Economic choice with versatile file management solution*



- ❖ All-digital imaging technology
- ❖ USB port, permanent image storage up to 90, optional DICOM ,VGA port
- ❖ Powerful user-define image parameter groups, exam modes and measurement/calculation packages
- ❖ Complete clinical solutions for: obstetrics, gynecology, abdomen, urology, small parts, orthopedics, pediatric, etc. support as much as 6 transducers

# Involved in more application fields...



Women's care



Abdomen

Urology,  
anesthesia and  
Physical-therapy



General  
application



Emergency care for  
fast diagnosis



Veterinary use

More to be expected  
in the coming  
years ...



# DC-6/DC-6 Expert

**Premium Professional Efficient Ergonomic**



**Expert**



# DC-6/DC-6 Expert

## **Premium, Professional, Efficient and Ergonomic**



- ◆ Wide clinical application fields
  - ◆ 12 transducers with 4 transducer ports
  - ◆ B mode, M mode, CW, PW , HPRF, CDFI, Power and Directional Power
  - ◆ Dual/Quad display, Duplex/Triplex PW, Trapezoidal imaging
- ◆ Abundant Information Solution
  - ◆ iStation™ patient management system
  - ◆ 1024 cine capacity
  - ◆ Standard 80G HDD
  - ◆ Standard 4 USB ports, CD-RW, DVD recorder
  - ◆ ECG-module and complete I/O ports
- ◆ Intelligent workflow: iTouch, IP, iscape



## DC-3 Compact Design

- *Compact size with best mobility*





# M5 Miniature & Multifunction

## *M5 - Miniature of a Full Cart-based System*

### System Overview

15 inch high resolution LCD

10 probes for multiple applications

6.5 kg/14 pounds

1 hour battery life for extended scanning time

Multi-language support\*

Various accessories

CE, FDA, UL .....

